

architecturemalaysia

30 UNDER 40



REVISITED



**30
UNDER
40**
REVISITED



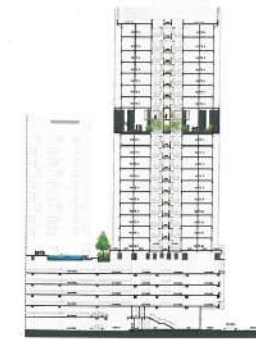
Ar TEH YEE NENG, ALAN

ATELIER ALAN TEH ARCHITECT

**UNIV360
PLACE**

With the advent of the recent MRT expansions at the Klang Valley, the high-rise living trend has now expanded to all sub-urban townships. This project intends to extend the bustling commercial activities currently at Seri Kembangan towards this more industrial neighbourhood. Within the industrial context of the site, this project aims to revitalise an otherwise industrial backyard of Taman Serdang Jaya. The site of Univ360 Place is sandwiched between a busy highway and an industrial precinct of Serdang. While the strata shops at the podium relate to the streetscape, the towering forms of Block A and Block B are orientated towards the north-south direction as well as towards views of KLCC and the lake vistas of Mines Resort.

Apart from orientating the units towards the best views and solar orientation, we pushed the boundary on having very high green ratios of 60% over the total site area. We not only strived to create sustainable high-rise buildings but also took pride in nurturing sustainable urban communities by creating a variety of green communal spaces that are dispersed as close to the habitable units as possible, thus encouraging the users to interact more often. By emphasising on 'communal interaction' between its inhabitants, it is hoped that the 'communal spirit' can be nurtured amongst its users and inhabitants, a quality that is somewhat lacking in most high-rise communities. These interactive spaces are realised by various landscaped spaces dispersed over the whole building, from podium to lift lobbies, sky terrace and gardens, hanging gardens and pocket gardens. The net effect is additional usable green spaces for leisure and community interactions.



Section A-A



Section D-D

